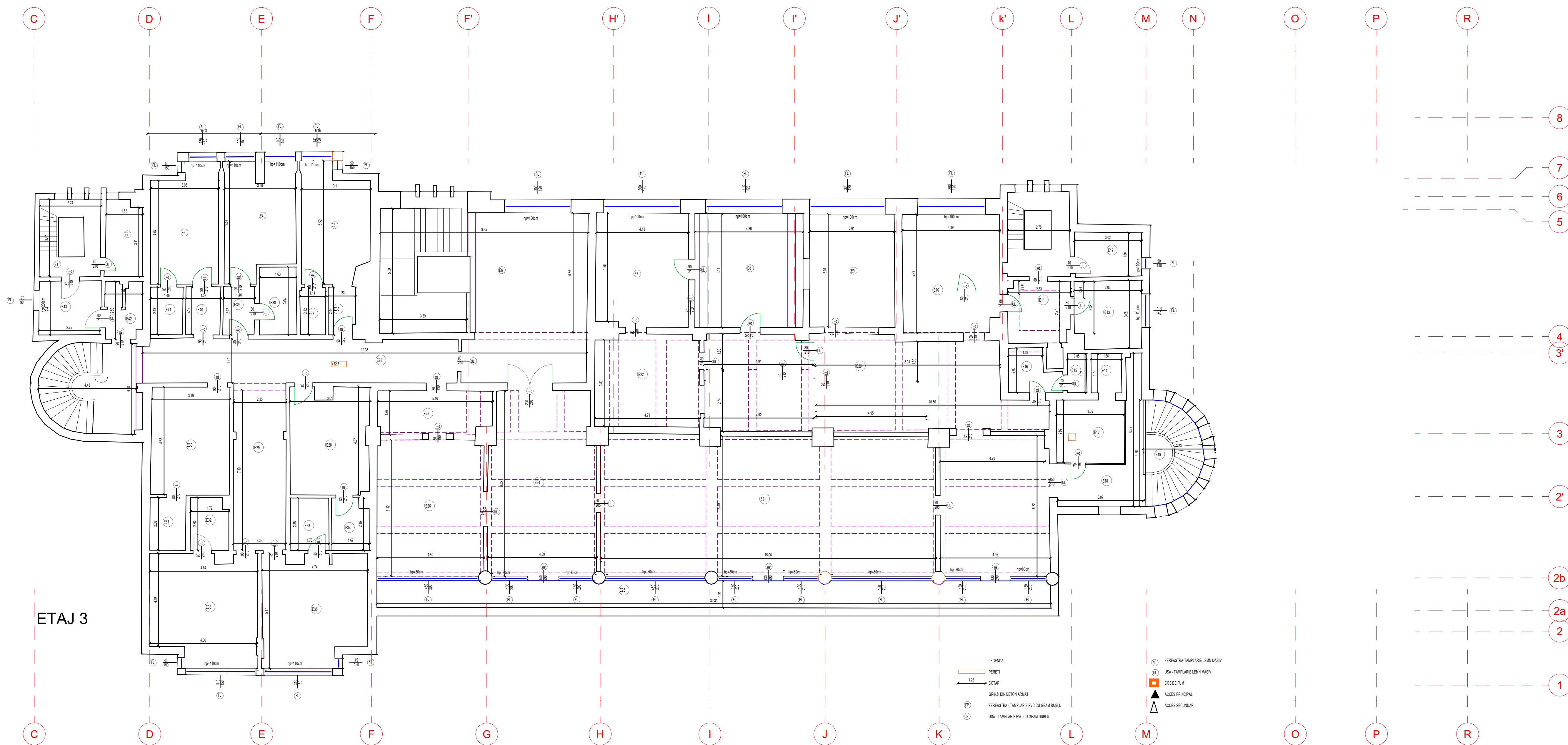
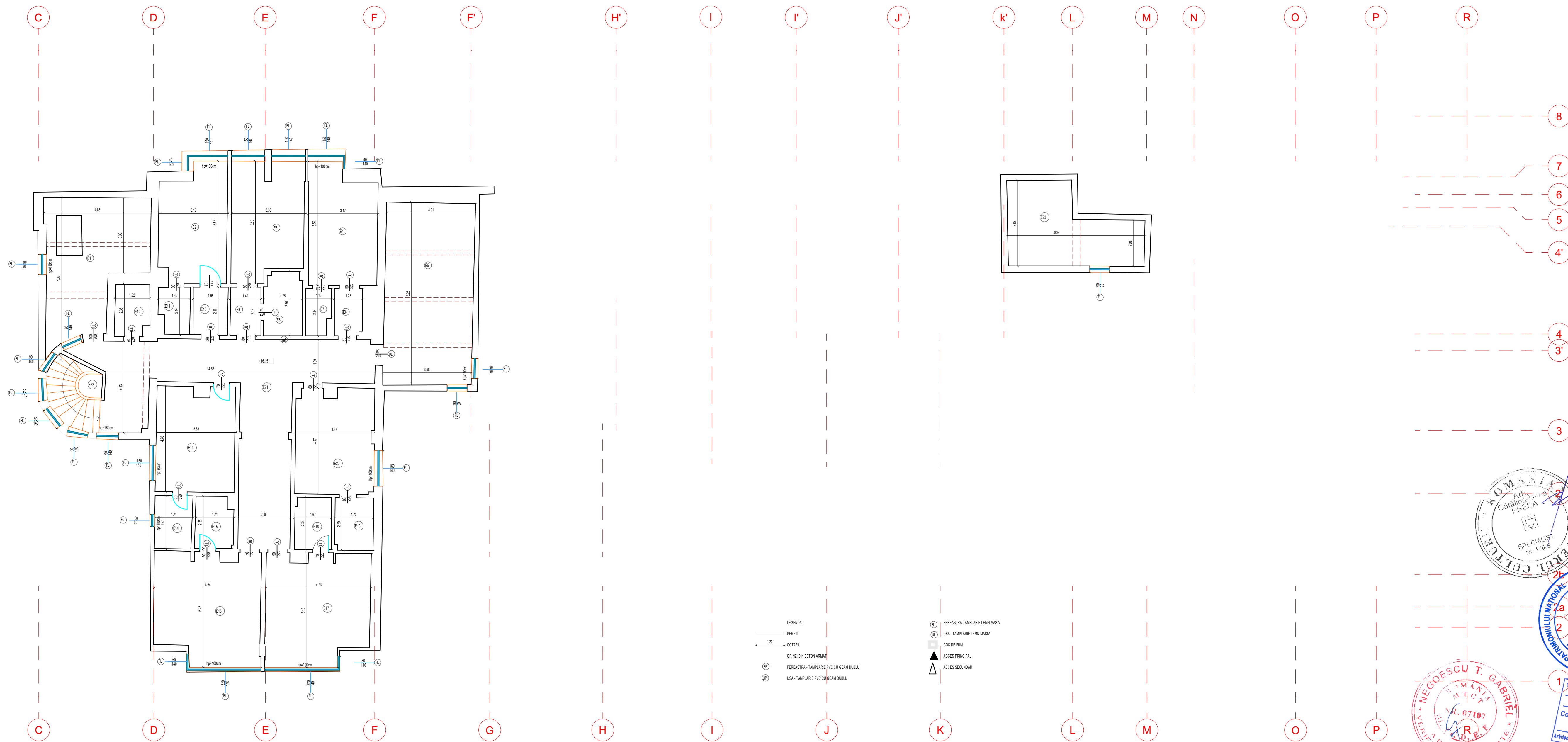


Nr. Ctr.	CAMERA					FINISAJE	Pereți
	Simbol	Destinație	Suprafața (mp)	Perimetru (m)	Înălțime utilă (m)		
1	E2	CASA SCARI	9,57	12,45	3.13	CIMENT-MOZAIC	ZUGRAVELI
2	E2	BAIE	5,17	10,30			
3	E3	SALON	15,51	17,27			
4	E4	SALON	15,83	19,64		CIMENT-MOZAIC	FAIANȚA-ZUGRAVELI
5	E5	SALON	15,05	16,08			
6	E6	CASA SCARI	40,84	41,11			
7	E7	SALON	21,09	18,59		CIMENT-MOZAIC	
8	E8	SALON	24,58	19,96			
9	E9	SALON	19,44	17,84			
10	E10	SALON	23,00	19,36			
11	E11	CASA SCARI	19,44	26,19			
12	E12	BIROU	9,99	9,97			
13	E13	BIROU	8,95	12,36		GRESIE	FAIANȚA-ZUGRAVELI
14	E14	BAIE	2,43	6,28			
15	E15	BAIE	1,50	5,23			
16	E16	HOL	3,96	8,91			
17	E17	SALON	8,62	11,74			
18	E18	SALON	42,40	41,62			
19	E19	CASA SCARI	10,14	12,78		CIMENT-MOZAIC	ZUGRAVELI
20	E20	SALON	59,12	40,93			
21	E21	SALON	39,75	45,00			
22	E22	SALON	19,31	17,78			
23	E23	HOL	55,76	59,59			
24	E24	SALON	38,95	26,18			
25	E25	BAIE	38,51	63,50		CIMENT-MOZAIC	ZUGRAVELI
26	E26	SALON	29,23	21,20			
27	E27	HOL	9,68	14,50			
28	E28	SALON	15,63	18,32			
29	E29	HOL	16,62	19,55			
30	E30	SALON	17,10	16,74			
31	E31	BAIE	1,43	7,67		GRESIE	FAIANȚA-ZUGRAVELI
32	E32	BAIE	3,96	8,22			
33	E33	BAIE	4,00	8,18			
34	E34	BAIE	3,75	8,89	CIMENT-MOZAIC	ZUGRAVELI	
35	E35	SALON	20,48	21,97			
36	E36	SALON	21,07	21,08			
	SUPRAFAȚA UTILĂ	633,89					
	SUPRAFAȚA TOTALĂ	724,96					
	SUPRAFAȚA CONSTRUITĂ	946,6					



PLAN ETAT 4 - TABEL SUPRAFEET SI FINISARE								
CAMERA						FINISARE		
No. Cr.	Unit	Descriptie	Suprafata (m <sup>2</sup> )	Perimetrul (m)	hantare unita (m)	Particula	Postul	Taxa
1	E1	CAMARA TRECATOR	20.43	23.52	2.1	CMENY		
2	E2	SAIUN	15.56	17.48				
3	E3	SAIUN	20.43	15.52	1.35	CMENY-MONAC	ZUGRAVU	
4	E4	SAIUN	13.82	17.47				
5	E5	HOL	31.89	24.67	2.35			
6	E6	HOL	2.2	6.88				
7	E7	BAL	2.17	5.41				
8	E8	BAL	4.77	9.39		GRESIE	FAANTUA - ZUGRAVU	
9	E9	HOL	10.55	7.15	1.35	CMENY-MONAC	ZUGRAVU	
10	E10	HOL	3.35	7.63				
11	E11	BAL	2.79	7.1		GRESIE	FAANTUA - ZUGRAVU	
12	E12	BAL	1.11	7.65				
13	E13	SAIUN	10.54	17.48		CMENY-MONAC	ZUGRAVU	
14	E14	BAL	4.08	8.3		GRESIE	FAANTUA - ZUGRAVU	
15	E15	BAL	3.82	7.62				
16	E16	SAIUN	23.55	22.55		CMENY-MONAC	ZUGRAVU	
17	E17	SAIUN	25.01	21.57	2.45			
18	E18	BAL	1.95	8.55				
19	E19	BAL	4.01	8.39				
20	E20	SAIUN	16.38	17.55		CMENY-MONAC	ZUGRAVU	
21	E21	HOL	36.49	30.05				
22	E22	GRUA SCARI	27.12	25.35				
23	E23	CAMARA TRECATOR	18.08	20.09		CMENY	ZUGRAVU	
SPRINTATA, ITALIA		277.20						
SUPRACATA TRECATOR		294.42						



DEVELOPER PROJECT:

Realizzatore il dottore Scapula Recupera, Medicina Fisica e Riabilitazione, ed in carica Spitalului Județean de Urgență Drobeta Turnu Severin, B-dul Carol I, nr.4

Adresa amplasament: Drobeta Turnu Severin, B-dul Carol I, nr.4  
Medelini

BENEFICIAR:

Unitatea Administrativ Teritorială Județul Mehedinți  
Spitalul Județean de Urgență Drobeta Turnu Severin

Proiectant: Sr. Mariela Alexandrescu 2

PROIECTANT GENERAL:

**SC CCC SOLUTIONS SRL** ARCHITECTURE  
INTERIOR DESIGN

Strada nr. 100, Bld. Unirii nr. 100, 17126-2000, Drobeta Turnu Severin, Mehedinți  
Tel: +40744 300 000, +40744 300 001  
E-mail: office@sc-ccc.ro, office@sc-ccc.ro  
www.sc-ccc.ro

PROIECTANT SPECIALIZAT ARCHITECTURE

**SC CCC SOLUTIONS SRL**

SPECIFICATE / NUME	SEMNTURA
Sr. Pavel Cosmin BRATU	<i>[Signature]</i>
PROIECTANT GENERAL: SR. MARIELA ALEXANDRESCU 2	<i>[Signature]</i>
Sr. Prof. arhitectura arh. Emil Petrică	<i>[Signature]</i>
Prof. arhitectura arh. Emil Petrică	<i>[Signature]</i>
PROIECTANT SPECIALIZAT ARCHITECTURE	<i>[Signature]</i>
Sr. Cosmin BRATU	<i>[Signature]</i>
DETALII	
PLAN ETIA 3/5 I 4	Project nr.: 14
EXISTENT	Date: 17.10.2024
	Scale: 1:100
	Faza: 1
	Revizii:

Plan: RL/V05